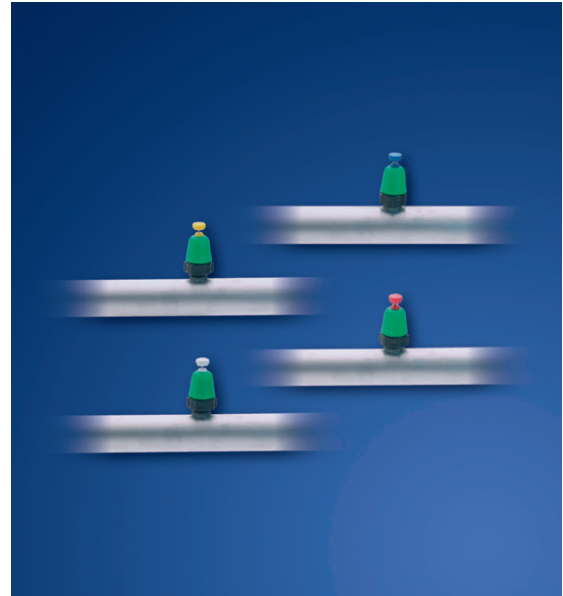




GW & GWM MEMBRANE

- ✓ For mist propagation, cooling, humidification, fine irrigation and irrigation
- ✓ Unique anti-drip function
- ✓ Low water consumption
- ✓ Self-cleaning



Accurate irrigation from variants for different requirements

The DGT by Senmatic GWM super nozzle with built-in membrane and filter can be supplied in various variants. The different types cover the following functions: Mist propagation, cooling, humidification, fine irrigation and irrigation. The built-in membrane offers many advantages compared to conventional nozzles.

Accurate irrigation

- The built-in membrane has a number of functions.
- The membrane works as a pressure regulator valve, causing all nozzles to open and close at the same time.
- Gives an accurate water distribution.
- Another function of the membrane is that it works as a non-return valve, preventing air being sucked into the distribution system, which again means that all nozzles open at the same time when irrigating.

Anti-drip function

- The built in membrane also has an anti-drip function. This means that when the irrigation has finished.
- The membrane closes the nozzle, preventing drip from the system.
- The anti-drip function also prevents dripping from the system if the levelling of the tube system is not accurate.

Minimum of maintenance

- The GWM super nozzle is practically maintenance-free.
- The built-in filter stops particles in the water settling in the nozzle.
- Mounting a flush valve at the end of each tube section is recommended, as is flushing the system regularly for particles caught by the built-in nozzle filter.
- The nozzle pin vibrates slightly during irrigation, which keeps the nozzle free of sediments.

Mounting

- Mounting and running the GWM nozzle system is very economical.
- The low water consumption of the nozzles reduces dimensions of the tube and the feeding pump.
- The easy-fit tube system minimizes labour costs when installing the system.

GW super nozzle

- For less demanding systems, the GWM super nozzle can be supplied without membrane, as the GW super nozzle.
- The GW super nozzle offers the same advantages as the GWM super nozzle with regard to mounting and running, but does not offer the unique anti-drip and accuracy functions of the membrane.



SPECIFICATIONS / GW & GWM SUPER NOZZLES

GVM Membrane Super Nozzle

Colour of the needle indicates application	Water consumption 3,5-5 bar L/min	Lifts water	Distance between nozzles	Watering diameter	Recommended tube spacing
White = Mist propagation and cooling	2,5	0,15 - 0,20 m	1,2 - 1,5 m	3,5 m	2,0 - 2,5 m
Blue = Mist propagation and cooling	2,5	0,25 - 0,35 m	1,2 - 1,5 m	3,5 m	2,0 - 2,5 m
Red = Fine watering	4,3	0,25 - 0,35 m	1,5 - 2,0 m	5,5 m	3,0 - 3,5 m
Yellow = watering	6,8	0,25 - 0,35 m	2,0 - 2,5 m	7,5 m	4,0 - 4,5 m

GV Super Nozzle

Colour of the needle indicates application	Water consumption 3,5-5 bar L/min	Lifts water	Distance between nozzles	Watering diameter	Recommended tube spacing
White = Mist propagation and cooling	2,0 2,5	0,15 - 0,20 m	1,2 - 1,5 m	3,5 m	2,0 - 2,5 m
Blue = Mist propagation and cooling	2,0 2,5	0,25 - 0,35 m	1,2 - 1,5 m	3,5 m	2,0 - 2,5 m
Red = Fine watering	3,5 4,3	0,25 - 0,35 m	1,5 - 2,0 m	5,5 m	3,0 - 3,5 m
Yellow = watering	7,0 7,8	0,25 - 0,35 m	2,0 - 2,5 m	7,5 m	4,0 - 4,5 m

Distributor:

Contact details:

DGT by Senmatic
Phone: +45 64 89 22 11
dgtsales@senmatic.com - www.senmatic.dk

Version: 18092023

Head office:

Senmatic A/S - Industrivej 8 - DK-5471 Sønderlø